

**United By Our Passion
Driven By Your Desire...**





In Association with
MSME Partner
RURBAN

Industry's Trusted Face

INCEPTION

Breaking through the conventional routes of advertising, Push India Limited came into existence in 1974.

Since then we have known Brands, Industry and Space! We are the extended arm of the marketing team of all our clients for all these years and a core part of strategic discussion, brand positioning, brand implementation and strategic roll outs on national level.

PRESENCE

Our footsteps are present across India, with factories based out of Noida, Mumbai, Bangalore, Kolkata & Orissa.

We are Head Quartered in Delhi with a network of 350+ associates delivering our projects across India, 24/7, 365 days a year.



1.

Why Are We Here
Who Are We
What We Do
What We Contribute





“We are CEOs of our own
companies: ME Inc.
To be in business today,
Our most important job is to
Be Head Marketer
For the brand called YOU..”





We are a team of energetic, creative, aggressive & passionate professionals delivering 360degree solutions for our clients.

- » Conceptualising
 - » Designing
 - » Developing
 - » Implementing Retail Design
 - » Merchandising
 - » Branding in any format
- 



We value our Client and understand the importance of Brand, objective, time, budget & competition.

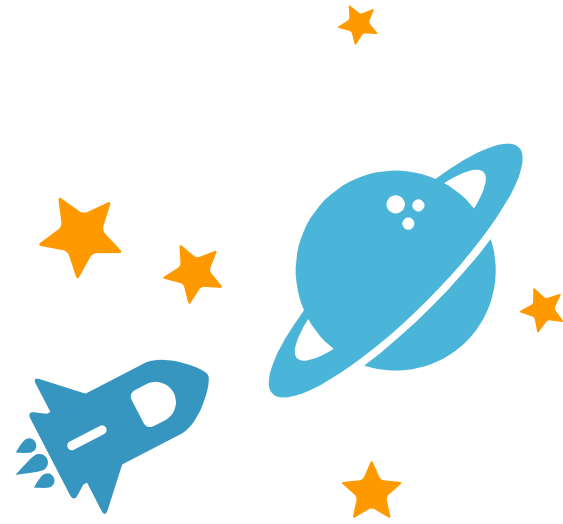
- » We **C**ommunicate
 - » We **D**esign the communication
 - » We freeze on the **B**udget
 - » We **F**abricate the Approved design
 - » We **I**nstall the premium inhouse finishes
 - » We control **L**ogistics across India
 - » We **T**rack through GPS enabled Mobile Application
 - » We **M**anage the Project
 - » We **D**eploy across India
- 

We Create Experience through our honest efforts!

- » Turnkey Solutions
- » Design2Launch
- » LED Solutions
- » Moving Displays
- » Retail Displays
- » POS & PROPS
- » Custom Signs & Graphics
- » LED Signages
- » Digital & Wall Painting –
- » CNC Cutting
- » Light Boxes for Brand Enhancement
- » Print Solutions
- » Corporate Films/Walk Thru
- » Pylons
- » Out of Home
- » Launches/Promotions
- » Events & Activations

THE CONCEPT OF OURS

**To Design...
Design for
Tomorrow...Creating
Innovations...Delivering
Solutions!!....All About
US to follow..**



**We Never Say No...
As We Are Always On It..
For The Client..
For Us..**



YES... That's Our Strength

Retail experience with deployment done in **673 districts** across India which is **90% of the country** covered in some form or the other

A stylized map of the North Zone of India, highlighted in yellow, with the number 1 in the center.

1

North Zone
91%

A stylized map of the West Zone of India, highlighted in light green, with the number 2 in the center.

2

West Zone
80%

A stylized map of the East Zone of India, highlighted in orange, with the number 3 in the center.

3

East Zone
75%

A stylized map of the South Zone of India, highlighted in light blue, with the number 4 in the center.

4

South Zone
63%

The Various Departments..

Art & Visualization

- Develops Visuals & Layouts
- Adaptations
- Graphic Designing – 2D Solutions
- 3D Solutions / Walk Thru
- Autocad Solutions

Media Planning & Procurement

- » Best Medium / Affordable Budget / Market Competition basis the produc & client requirement
- » Centralised Procurement for Retail Fitouts for uniformity
- » Centralised Dispatches for more control

Interior Workshops

- Own Production Houses
- Premium Fabricated Finishes
- Tailor made VM
- Patented Display Units
- Furniture & Fixtures
- Civil & Electricals

The Various Departments..

Research & Technology Department

- Measuring the effectiveness of medium proposed / systematic quantifiable basis for planning
- Statistical modelling & Sampling techniques
- GPS based tracking system for real time reporting
- Reporting portal from allocation to invoicing
- App Support available

Production & Branding Solutions

- Scrolling Displays
- Acylic Solutions
- Channel Letters
- Graphic Solutions
- ACP Signage & Cladding Solutions
- LED Signage Solutions
- Monoliths

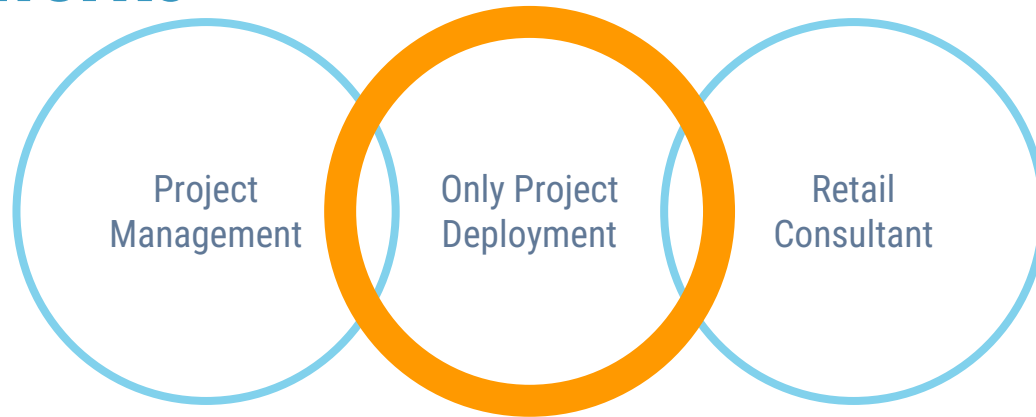


2.

ASSOCIATION MODELS



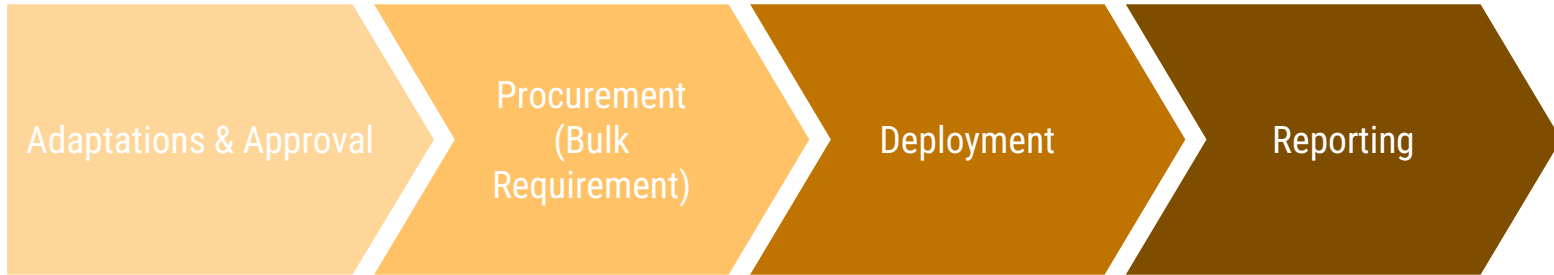
How It Works



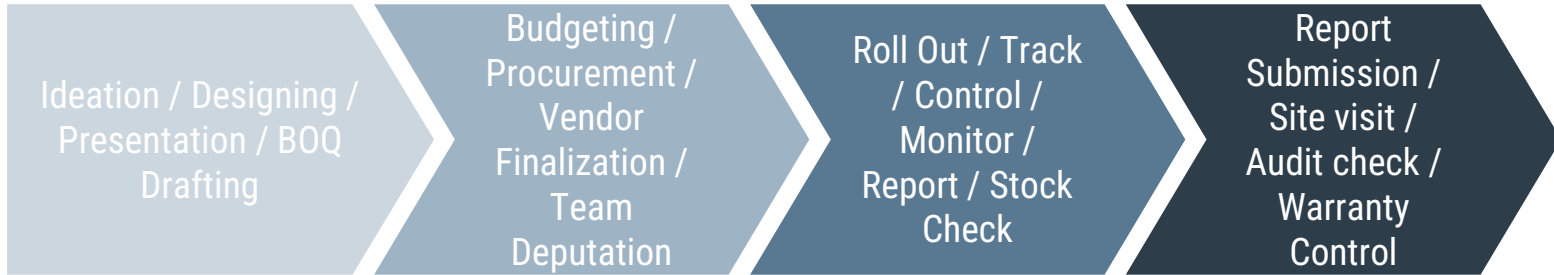
PROJECT MANAGEMENT



ONLY DEPLOYMENT



RETAIL CONSULTANT



OUR CLIENTS



The Mobil logo, featuring the word "Mobil" in a blue, italicized sans-serif font with a white outline, set against a white background.

The MOTUL logo, with the word "MOTUL" in white, bold, italicized sans-serif letters on a red rectangular background.



OUR CLIENTS



OUR CLIENTS



facebook















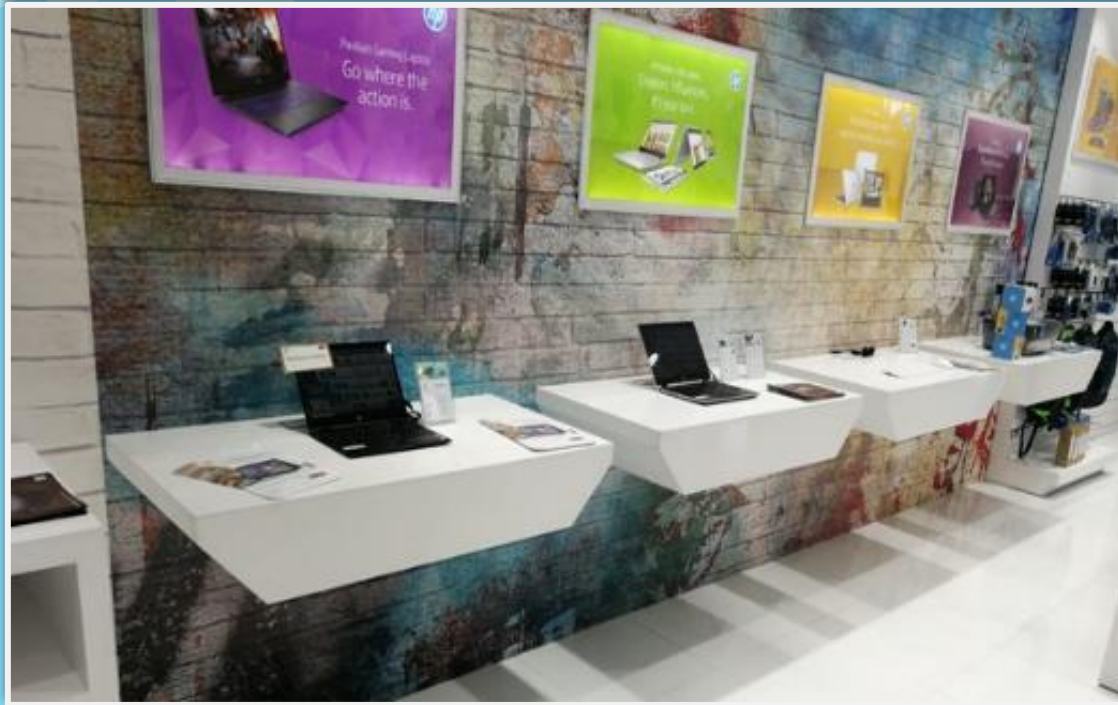
















HP LATEX



ROUTER



UV Flat Bed FR3218



HP Designjet 5800 Digital



HP Latex 360



Versa Camm Print & Cut VS-640i Roland



Router



Automatic Chanel Bending Machine



Colorjet



Plotter Cut



Laser



Saw Cutter

OUR PRESENCE

- ✓ Regd. Office : Mayur Vihar, Delhi - 110096
- ✓ Corporate Office : A4-M, Sector 80, Noida 201305
- ✓ Regional Office (West) : Mayuresh Square, 7th Floor, Belapur, Sector 15, Navi Mumbai - 400614

- ✓ **Regional Set Ups :**

Bhubaneshwar – Food Processing Park, D-56, Industrial State near Coca Cola Factory, Khurda, Odisha – 752055

Kolkata – Billo Mukherjee Bari, Naskarpara Road, Barol Main Road, Kolkata, West Bengal – 700103

Bangalore – H. No. 40/4, Kenchenahalli, R.R. Nagar, Bangalore – 560098

Mumbai – Gala No 25, Harish Industrial Estate – 2, Vasai East – 401208



THANKS!

Any questions?

You can find me at

» nitin@pushpindia.net



